



GRAND MERCURE

SINGAPORE ROXY



AT GRAND MERCURE SINGAPORE ROXY, OUR STORIES BRING CULTURES TO LIFE

576 guestrooms & Suites
8 function rooms

Points of interest:

Singapore Sports Hub – 10 mins
Singapore and Changi Business Park – 10 mins
Changi Airport and the new Terminal 4 – 15 mins
Marina Bay, Orchard Road – 15 mins
Suntec Convention Centre – 15 mins

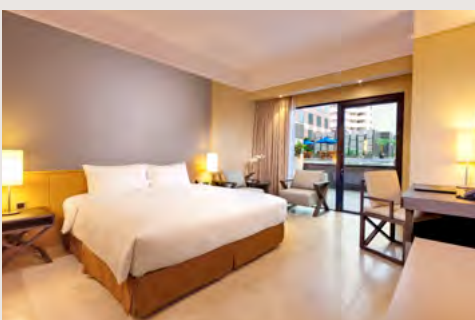
LOCATION

The hotel is nestled in the heart of historical Katong, a heritage area on the East Coast of the city rich in Peranakan culture, a unique ethnic group that encapsulates all of Singapore's Chinese, Malay, Indian and Eurasian cultures. A short walk away is East Coast Park, an ideal venue for a family outing with its attractive beaches and fun recreational facilities. Singapore's famous food centres offering the city's favourites are just a stone throw away from Grand Mercure Singapore Roxy. Opposite the hotel is the urban and chic Parkway Parade Shopping Centre that provides a one-stop shopping destination. Do not forget the nearby I12 Katong too.

Just in front of Grand Mercure Singapore Roxy will be an underpass that links the hotel to Marine Parade MRT Station of the upcoming Thomson-East Coast MRT Line (TEL), which is slated to be completed by 2023.

Guests staying at Executive Rooms & Suites will enjoy exclusive services at the Executive Lounge:

- Personalised service and private check-in
- Complimentary wireless broadband internet facility
- Complimentary breakfast
- Wide Selection of reading materials
- All-day refreshments
- Complimentary two-hour use of the Executive Lounge Boardroom
- Complimentary evening cocktails with hors d'oeuvres





RESTAURANTS & BAR

WAVE CAFE (Lobby Level), Tel: 6340 5882

Enjoy a delectable variety of novelty pick-me-ups, cakes, pastries and gourmet coffee/tea that tingle your senses or relax over a glass of wine.

JIA WEI (家味) CHINESE RESTAURANT (Level 2), Tel: 6340 5678

Dine in an elegant atmosphere with a selection of intricate Cantonese cuisine and traditional dim sum, complemented by an extensive list of wine labels.

FEAST@EAST BUFFET RESTAURANT (Level 3), Tel: 6340 5665

Feast on a nostalgic array of Singapore's diverse blend of cuisine with Chinese, Malay, Indian, Eurasian and Peranakan influences amidst contemporary Asian design.

BREEZ BISTRO • BAR (Level 4), Tel: 6340 5860

Located on Level 4, with a nice view of the refreshing swimming pool, guests may enjoy the food and beverage selections from breez bistro.bar; both indoor – in the comfortable restaurant, lounge and bar – or outdoor by the pool. It also has a Halal-certified kitchen.



- Our professional services include:
 - State-of-the-art technology and full technical support
 - Complimentary wireless broadband internet access
 - Customised food and beverage selections catered by our dedicated team

ROOM AMENITIES

- Coffee and tea making facilities
- Hair dryer
- In-room safe
- In-room minibar
- Voice mail
- Duvet
- Cable TV
- Iron and board
- International direct dial telephone
- Sprinkler & smoke detector
- Electric power supply: 230V/50HZ
- Complimentary usage of Handy Smartphone with unlimited international calls to 10 countries

FACILITIES & SERVICES

- Adults and Kids Pool
- Fitness centre
- In Room Spa
- Business centre
- Free Wi-Fi in rooms and public areas
- Excursion & tour centre
- Concierge & limousine services
- Shuttle services to Airport, MRT Station and City Area

- 576 units
- 160 Superior Rooms (32 m²)
- 242 Deluxe Rooms (32 m²)
- 40 Deluxe Ocean View (32 m²)
- 9 Deluxe Pool with Terrace (37 m²)
- 87 Executive Rooms (32 m²)
- 13 Junior Suites (50 m²)
- 12 Studio Suites (52 m²)
- 12 Business Suites (54 m²)

MEETING IN STYLE

- 2 function rooms on Level 4 that can be combined into 1 function room of 211m²
- 6 function rooms on Level 3 that can be combined into 1 ballroom of 933m²

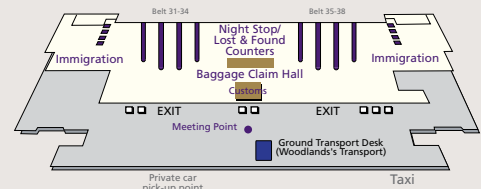


COMPLIMENTARY HOURLY SHUTTLE BUS SERVICE TO/ FROM CHANGI INTERNATIONAL AIRPORT 6.30AM TO 1.30AM (TERMINAL 1-3)

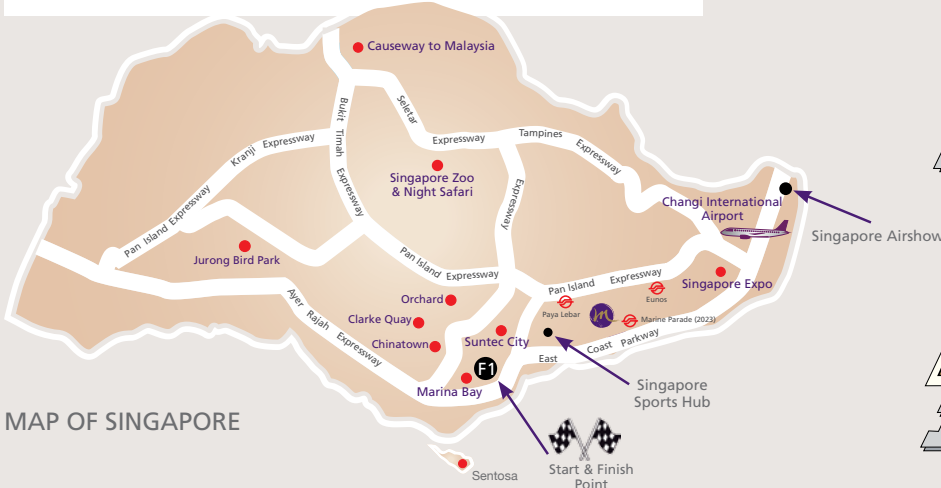
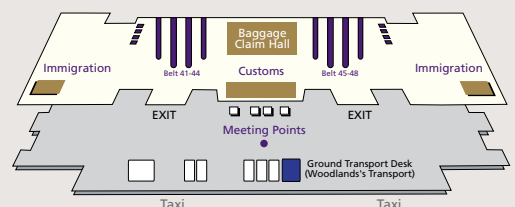
TERMINAL 1

Due to ongoing renovations, please enquire with the airport personnel for directions to the Ground Transport Desk.

TERMINAL 2 ARRIVAL HALL



TERMINAL 3 ARRIVAL HALL



MAP OF SINGAPORE